

# WASTE BITES THE DUST

**300 | 400 | 800 SERIES**

**MOBILE | STATIONARY | HYBRID**



# Hi-Vac®

**INDUSTRIAL  
VACUUM SYSTEMS**

# DEBRIS COLLECTION CAPABILITIES



		ALL MATERIALS	HEAVIEST MATERIALS	ALL MATERIALS	ALL MATERIALS	ALL MATERIALS
		SMALLER AREAS	LARGE AREAS	LARGE AREAS	MATERIAL TRANSFER	MATERIAL TRANSFER
		300 SERIES	400 SERIES	800 MOBILE	800 STATIONARY	800 HYBRID
Standard Vacuum		16" Hg and 600 cfm	18" Hg and 1,650 cfm	16" Hg and 1,800 cfm		
Motor Power (HP)		20-25	20-75			
Max Conveyance (Ft)		200	500			
Pickup Capacity (TPH)		Up to 8	Up to 22.5			
Filter Type		Round wide-pleat GORTEX	Envelope-style	Round wide-pleat GORTEX		
Filter Surface Area (Ft²)		132	300	72-144		
HEPA Filtration		Optional				
Filter Access		Top		Top, swing-out lid assist		
Material Separation		2-stage	3-stage	2-stage		
Material Capability		Dry, Wet, Liquid				
Hopper Capacity (Yd³)		0.4	1 to 2		0.5 to 2	0.75
Hopper Dump Type		Self-dumping design			Bottom or continuous discharge	
Explosion Proof Options		Limited	Yes			
Unit Movement		Portable	Portable, available in-plant & highway trailers		N/A	Portable
Unit Footprint		55" x 58"	73" x 88"	67" x 82"	96" x 56" & 54" x 55"	72" x 85"
Unit Weight (Lbs)		2,990	6,715	6,335	4,260 & 4,338*	9,718

\* Weight & dimensions may vary depending on powerhead configuration.



# THE MOST DURABLE **INDUSTRIAL VACS** ON EARTH

## **LEGENDARY DURABILITY**

- Universal  $\frac{3}{16}$ " plate steel construction
- Abrasion-resistant intake components
- Runs for years with minimal maintenance

## **ROBUST AND SCALABLE**

- Robust 16" to 18" Hg PD vacuum pumps
- Cool running TEFC electric motors
- Up to 300 ft<sup>2</sup> of filter surface area

## **BULLETPROOF OPERATION**

- Automatic filter cleaning systems
- Multi-stage filter systems keep waste in the hopper and out of the blower
- Broken filter shutdown
- Dirty filter shutdown
- High blower discharge temp shutdown
- Full unit hopper shutdown





# WASTE BITES THE DUST



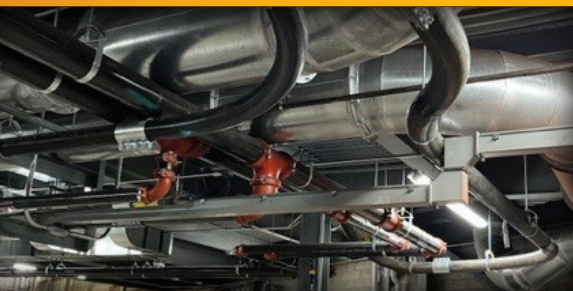
*Any Material, From Dry & Light to Heavy & Wet*



*Cleans Up Everywhere*



*Protects Your Plant and Your People*



*Power to Move Heavy Sludge Long Distances*



**SO MANY  
OPTIONS**

Purchase, lease and rental  
options for all units.







## MOVES ANY MATERIAL

- Captures the lightest fugitive dust, combining high air volume with highly clog-resistant filtration
- Wet heavy sludge options, with maximum power & abrasion-resistance
- Conveyance distances out to 500'
- Conveyance capacity up to 22.5 Tons Per Hour (TPH)

## CLEANS UP EVERYWHERE

- Mobile configurations for general dust & waste collection
- Stationary configurations for material recycling or conveyance
- Position indoors with electric power & sound-deadening packages
- Position outdoors or remote with optional diesel or LNG power

## PROTECTS YOUR PLANT PROTECTS YOUR PEOPLE

- Comprehensive explosion-prevention options, including filter grounding, explosion isolation, and Class I/II control panels
- Available exclusive dry gel baghouse fire extinguisher system
- Helps you meet OSHA combustible dust standard 29 CFR 1910.307 and Directive CPL 03-00-008
- Very fine particulate matter capture with HEPA filter options, available on all units
- Helps you meet OSHA respirable silica standard 29 CFR 1910.1053, and MSHA 30 CFR Part 60

## YOUR MANIFOLD SOURCE

- Full consultative design services available
- Standard CAD drawings with detailed bills of materials for all projects
- Comprehensive project management services, including initial & pre-install walkthroughs, provided for all projects

**GET A  
MANIFOLD  
SYSTEM  
DESIGN QUOTE**





# KEY OPTIONS

	300	400	800	800 STATIONARY	800 HYBRID
Alternate Voltage Ranges	✓	✓	✓	✓	✓
Diesel & LP Gas Engine		✓	✓		
On-Board Air Compressor	✓	✓	✓	✓	
NEMA 7/9 Control Panels for Class I & II Environments	✓	✓	✓	✓	✓
Stainless Steel Material Inlet Assembly	✓	✓	✓	✓	✓
Dry Gel Baghouse Fire Extinguisher Assembly			✓	✓	✓
Grounded Filter Cartridges	✓		✓	✓	✓
Grounded Filter Bag Assembly		✓			
Grounding Reel Assembly	✓	✓	✓	✓	✓
Explosion Isolation Valve Assembly		✓	✓	✓	✓
Vacuum Breaker Assembly	✓	✓	✓	✓	✓
HEPA Filtration	✓	✓	✓	✓	✓
Discharge Vibrator				✓	✓
Noise Attenuation Package		✓	✓	✓	✓
Discharge Valve Options				✓	✓
In-Plant & Highway Trailers		✓	✓		

**300 | 400 | 800  
SERIES**

**PROVEN**

**VACUUM**

**Hi-Vac®**

**PERFORMANCE**

[www.hi-vacproducts.com](http://www.hi-vacproducts.com)